



Grid

Setup Guide

Windows



Thank you for purchasing Grid!

To get Grid up and running, it is absolutely necessary to follow the step-by-step instructions very carefully. Setting up Grid for the first time will take between ten and fifteen minutes. Any time after that will take under sixty seconds.

We've outlined action points in bold, in the left-hand side margin. If you feel comfortable, you can just do the action points and skip the subsequent explanations. Read the explanations to know more about what's going on.

What do you want to do? Choose the chapter which fits your situation.



Installing and using Grid for the first time



Running Grid any other time



Troubleshooting scenarios



Installing and using Griid for the first time 4

There are six steps you need to follow to install Griid. We'll let you know at each stage how far along you are so that you never get lost in the process.

1. Bonjour	4
2. Griid Installer	4
3. Network	5
a. Create ad-hoc network	5
b. Connect the iPhone/iPad to the ad-hoc network	6
4. Griid Connector	7
5. Ableton Live Control Surface	7
6. Launch Griid	8



Running Griid any other time 9

There are four quick easy steps to carry out when you want to use Griid. These will soon become second nature but for your first time our sign-posts will let you know where you are in the process.

1 Create ad hoc network	9
2 Connect to network with iPhone/iPad	10
3 Start Griid Connector	11
4 Launch Griid	11



Troubleshooting scenarios 12

- "Could not find Griid Connector on the Wi-Fi network"
- "MIDI Error"



Installing and using Grid for the first time

1. Bonjour 2. Grid Installer 3. Network 4. Grid Connector 5. Ableton Live 8 Control Surface 6. Launch Grid

1. Bonjour

Download and run Bonjour Print Services from apple.com

Download Bonjour Print Services from the following link:

<http://support.apple.com/kb/DL999>

Once downloaded, install the package.

2. Grid Installer

Download and run Grid Installer from grid.net/support

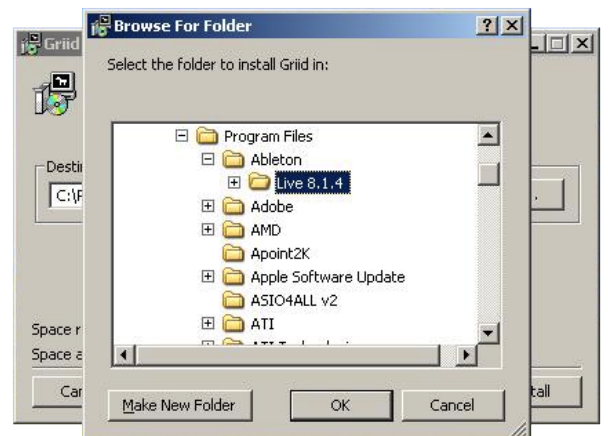
Download Grid Installer for Windows from grid.net/support, locate on your hard disk, unzip it and double-click on Grid Installer. You will be presented with a message box saying that you need to choose your Live 8 directory. The installer needs to know which version of Live 8 you're using, and where it is installed.

When you install Grid on Windows XP, you will get an installation Wizard.

- Choose "No, not this time" when prompted for Windows Update.
- Choose "Install the software automatically"
- Choose "Continue anyway" when the unsigned driver warning appears.



IMPORTANT INFO:
Make sure you're running the installer as Administrator! Otherwise, you might get permission errors.





3a. Network

The next step is setting up an ad-hoc network on your computer. You can go to the link on Microsoft, or follow the instructions as listed here.



QUICK TIP: It is indeed possible to connect Grid via a router. However, this increases latency.

Windows XP:

<http://www.microsoft.com/windowsxp/using/networking/setup/adhoc.msp>

- Go to Control Panel / Network Connections
- Right-click on “Wireless Network Connection”, select “Properties”
- In the Wireless Networks tab, click “Add...” and enter Grid as the SSID
- Optionally set a password
- Make sure the checkbox is ticked next to “This is a computer-to-computer (ad hoc) network”
- Click OK

Windows Vista:

<http://windows.microsoft.com/en-US/windows-vista/Set-up-a-computer-to-computer-ad-hoc-network>

- Open “Connect to a Network” by clicking the Start button, and then clicking Connect to.
- Click “Set up a connection or network.”
- Click “Set up an ad hoc (computer-to-computer) network, click Next, and then follow the steps in the wizard.

Windows 7:

<http://windows.microsoft.com/en-US/windows-vista/Set-up-a-computer-to-computer-ad-hoc-network>

- Click on Start and type “wireless”. Click on “Manage wireless networks”.
- Click on “Add”, then “Create an ad hoc network”, and “Next”.
- Enter “Grid” as the network name and optionally set a password.
- Click “Next to finish”.



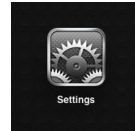
Installing and using Grid for the first time

1. Bonjour 2. Grid Installer 3. Network 4. Grid Connector 5. Ableton Live 8 Control Surface 6. Launch Grid

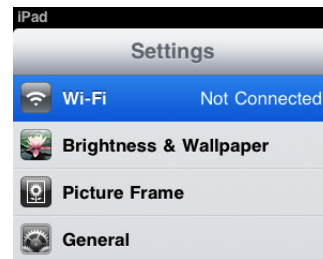
3b. Connect the iPhone/iPad to the ad-hoc network

Connect iPhone/iPad to the Grid network.

Open the Settings App



Select Wi-Fi



Select Grid in the list of networks





Installing and using Grid for the first time

1. Bonjour 2. Grid Installer 3. Network 4. Grid Connector 5. Ableton Live 8 Control Surface 6. Launch Grid

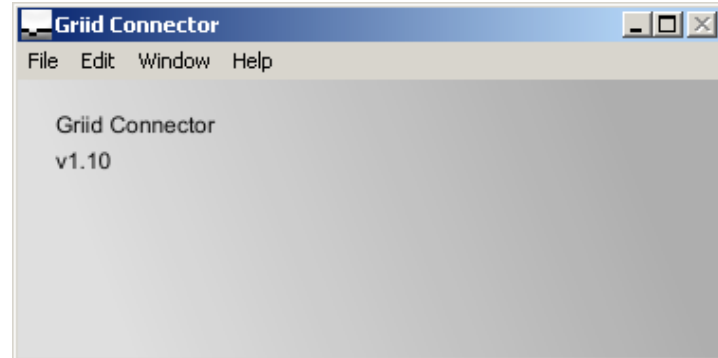
4. Grid Connector

Open Grid Connector.

Every time you want to use Grid, you need to start the Grid Connector. There's nothing to configure, it just needs to be running.

The first time you run Grid Connector on Windows XP, you might get an installation Wizard.

- Choose "No, not this time" when prompted for Windows Update.
- Choose "Install the software automatically"
- Choose "Continue anyway" when the unsigned driver warning appears.



IMPORTANT: You should always open Grid Connect AFTER creating an ad hoc network. If you change your Network settings, restart Grid Connector.

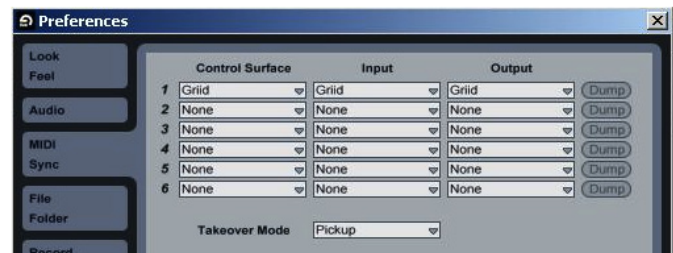
5. Ableton Live 8 Control Surface

Select Grid as Control Surface in Live.

Start Ableton Live and open the Preferences (click on Live in the menu bar and select Preferences).

In the MIDI Sync section, choose Grid as your Control Surface. Input and Output should be selected automatically. If not, choose "Grid" as Input and "Grid" as Output.

On Windows Vista/7, one of the ports might appear as "2- Grid". If you have the choice, choose "2- Grid".





Installing and using Grid for the first time

1. Grid Installer 2. IAC Driver 3. Ableton Live 8 Control Surface 4. Network 5. Grid Connector 6. Launch Grid

6. Launch Grid

Launch the Grid App on your iPad (or iPhone/iPod Touch) and select **AUTO CONNECT**.

Under certain circumstances, it won't connect the first time. This might be due to opening the Grid Connector too soon after creating the ad hoc network. In that case, close and re-open Grid Connector.

Hopefully, you won't be reading this as you'll be playing with Grid. In case you are, thanks for your patience and have fun!



Running Grid any other time

1. Create ad hoc network 2. Connect to Network 3. Start Grid Connector 4. Launch Grid

1. Create ad hoc network

The first step is setting up an ad-hoc network on your computer. You can go to the link on Microsoft, or follow the instructions as listed here.



QUICK TIP: It is indeed possible to connect Grid via a router. However, this increases latency.

Windows XP:

<http://www.microsoft.com/windowsxp/using/networking/setup/adhoc.mspix>

- Go to Control Panel / Network Connections
- Right-click on “Wireless Network Connection”, select “Properties”
- In the Wireless Networks tab, click “Add...” and enter Grid as the SSID
- Optionally set a password
- Make sure the checkbox is ticked next to “This is a computer-to-computer (ad hoc) network”
- Click OK

Windows Vista:

<http://windows.microsoft.com/en-US/windows-vista/Set-up-a-computer-to-computer-ad-hoc-network>

- Open “Connect to a Network” by clicking the Start button, and then clicking Connect to.
- Click “Set up a connection or network.”
- Click “Set up an ad hoc (computer-to-computer) network, click Next, and then follow the steps in the wizard. Choose “Grid” as the network name and optionally set a password.

Windows 7:

<http://windows.microsoft.com/en-US/windows-vista/Set-up-a-computer-to-computer-ad-hoc-network>

- Click on Start and type “wireless”. Click on “Manage wireless networks”.
- Click on “Add”, then “Create an ad hoc network”, and “Next”.
- Enter “Grid” as the network name and optionally set a password.
- Click “Next to finish”.



Running Griid any other time

1. Create ad hoc network 2. Connect to Network 3. Start Griid Connector 4. Launch Griid

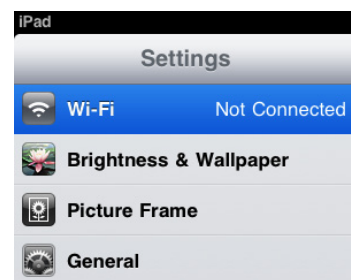
2. Connect to network with iPhone/iPad

Connect iPhone/
iPad to Griid
network.

Open the Settings App



Select Wi-Fi



Select Griid in the list of networks





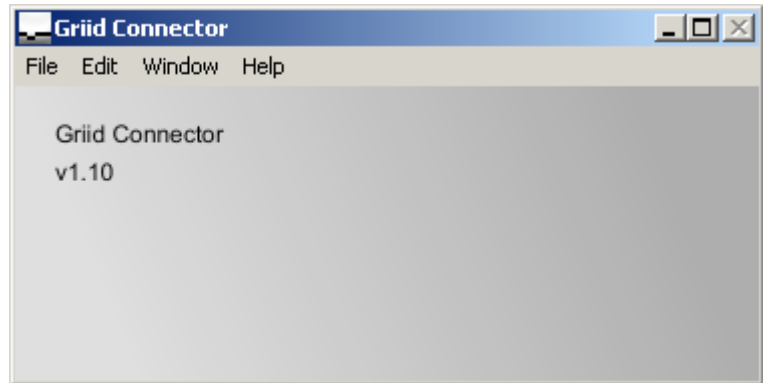
Running Grid any other time

1. Create Ad-hoc network 2. Connect to Network 3. Start Grid Connector 4. Launch Grid

3. Start Grid Connector

Open Grid Connector.

Start Grid Connector.



IMPORTANT: Make sure that you start Grid Connector **AFTER** setting up your network. Setting up Grid Connector is always the last thing to do before launching Grid. If you change your Network settings, you must click Refresh Bonjour.

4. Launch Grid

Launch the Grid App on your iPad (or iPhone/iPod Touch) and select Automatic Connect.

Under certain circumstances, it won't connect the first time. This might be due to opening the Grid Connector too soon after creating the ad hoc network. In that case, close and re-open Grid Connector.



Troubleshooting scenarios

■ “Could not find Grid Connector on the Wi-Fi network.”

This lack of connectivity could be due to a number of factors.

Carefully following this list of actions should remedy the problem:

- Check that the iPhone/iPad is connected to the same ad hoc network as the computer
- Check that no firewall is running on the computer (Comodo, Norton, etc)
- Check that Bluetooth is disabled on the iPhone/iPad and on the computer.
- Close and re-open Grid Connector
- Quit Grid on the iPad/iPhone, kill the app from the multitasking bar.

Now try launching Grid and connecting with Auto Connect. If Grid doesn't connect the first time, try again. If Auto Connect still doesn't work try Manual Connect. You can get the IP of your computer by following these steps:

Windows XP

- From the Start menu, right-click “My Network Places”, and then click Properties
- Double-click “Wireless Network Connection”
- Click the Support tab, and then click Details... The windows will display your IP.

Windows Vista

- From the Start menu, right-click Network, and then select Properties. This opens the “Network and Sharing Center”.
- Click View Status to the right of “Wireless Network Connection”.
- Click “Details...” and look for the address next to “IPv4 IP Address”

Windows 7

- In the system tray, click the network connection icon and select “Open Network and Sharing Center”.
- Click “Wireless Network Connection”
- Click “Details...” and look for the address next to “IPv4 IP Address”

If the connection still fails, contact support@grid.net

■ “MIDI Error”

Follow this list of actions:

- Are you running the latest version of Ableton Live?
- Is Grid Connector open?
- In Preferences / MIDI Sync: Check that “Control Surface”, Input and Output are all set to Grid.
- Close and re-start Grid Connector.

Now try to connect with Auto Connect.

If the problem persists, contact support@grid.net