



Grid

Setup Guide

Mac OS X



Thank you for purchasing Grid!

Setting up Grid for the first time should take about 5 minutes. Starting Grid any time after that will take under sixty seconds.

We've outlined action points in bold, in the left-hand side margin. If you feel comfortable, you can just do the action points and skip the subsequent explanations. Read the explanations to know more about what's going on.

What do you want to do? Choose the chapter which fits your situation.



Installing and using Grid for the first time



Running Grid any other time



Troubleshooting scenarios



Installing and using Griid for the first time 4

There are five simple steps you need to follow to install Griid.

1. Griid Installer 4
2. Ad hoc network 4
3. Griid Connector 5
4. Ableton Live 8 Control Surface 5
5. Launch Griid 5



Running Griid any other time 6

There are three simple steps to carry out when you want to use Griid.

- 1 Ad hoc network 6
- 2 Griid Connector 6
- 3 Launch Griid 7



Troubleshooting scenarios 8

- “Could not find Griid Connector on the Wi-Fi network”
- “Griid seems to connect, fades to black and says MIDI Error”
- “Restoring internet connection after using Griid”



Installing and using Grid for the first time

1. Grid Installer 2. Ad hoc network 3. Grid Connector 4. Ableton Live 8 Control Surface 5. Launch Grid

1. Grid Installer

Download and run Grid Installer from grid.net/support. Select Live 8 folder when prompted.

The Live folder is usually /Applications/ Live 8.x.x OS X/

If you want to install Grid for several different versions of Live, or if you upgrade Live, you'll need to run the Grid Installer for each version.

The installer will also install the Grid Connector to your Applications folder. You'll need to have Grid Connector running when you use Grid. We'll come back to this later.



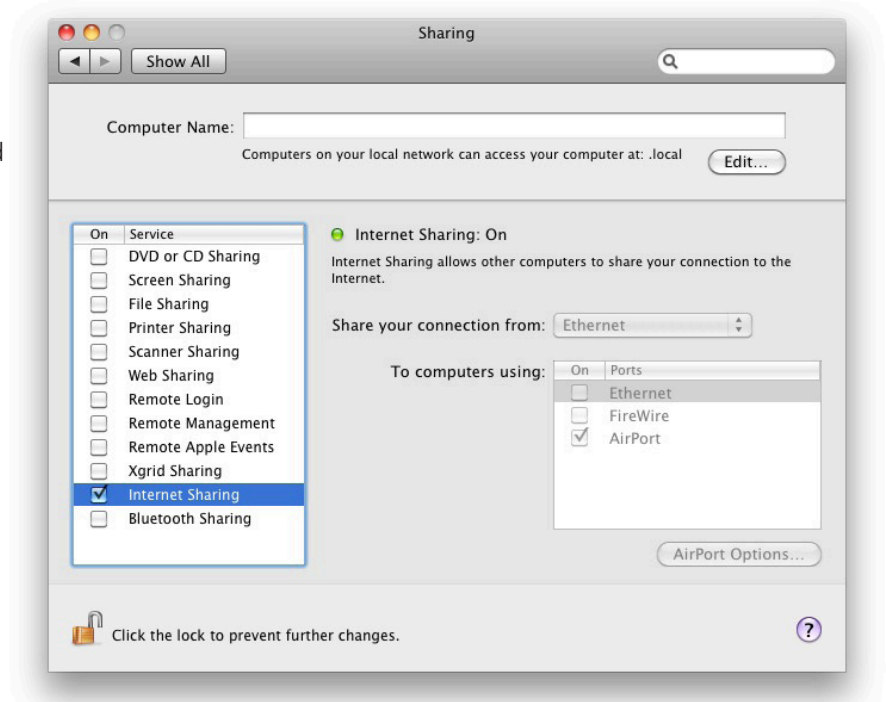
2. Ad hoc network

Activate Internet Sharing to computers using AirPort.

Go to System Preferences / Sharing. Find "Internet Sharing" in the list and uncheck it. Share your connection FROM Ethernet TO computers using AirPort. Click on AirPort Options if you want to set a password. Put a checkmark next to "Internet Sharing" and you're done.

Connect to the ad hoc network with your iPhone/iPad.

Go to Settings / Wi-Fi on your iPhone/iPad and connect to the ad hoc network.





Installing and using Grid for the first time

1. Grid Installer 2. Ad hoc network 3. Grid Connector 4. Ableton Live 8 Control Surface 5. Launch Grid

3. Grid Connector

Open Grid Connector before using Grid.

The Grid Connector was installed to /Applications/Grid. Make sure you always have the Grid Connector open when you want to use Grid. There is nothing to configure.



IMPORTANT: For best results, always open the Grid Connector after connecting the ad hoc network.



4. Ableton Live 8 Control Surface

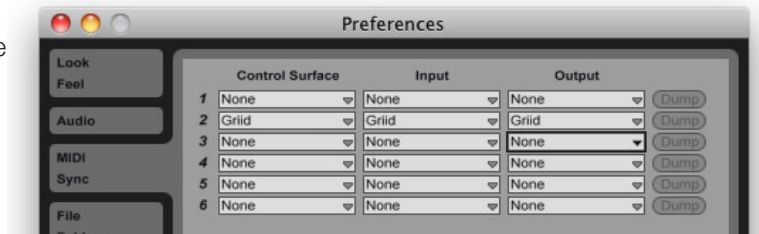
Select Grid as Control Surface in Live Preferences, Grid as Input/Output.

Start Ableton Live and open the Preferences / MIDI Sync. Choose the following settings:

- Control Surface: Grid
- Input: Grid
- Output: Grid



QUICK TIP: You can quickly open the preferences in Live with the ⌘-, keyboard shortcut.



5. Launch Grid

Launch Grid on your iPad and select AUTO CONNECT.

Check that your iPad is connected to the ad-hoc network. You should see the AirPort symbol in the upper lefthand corner.





Running Grid any other time

1. Ad-hoc network 2. Grid Connector 3. Launch Grid

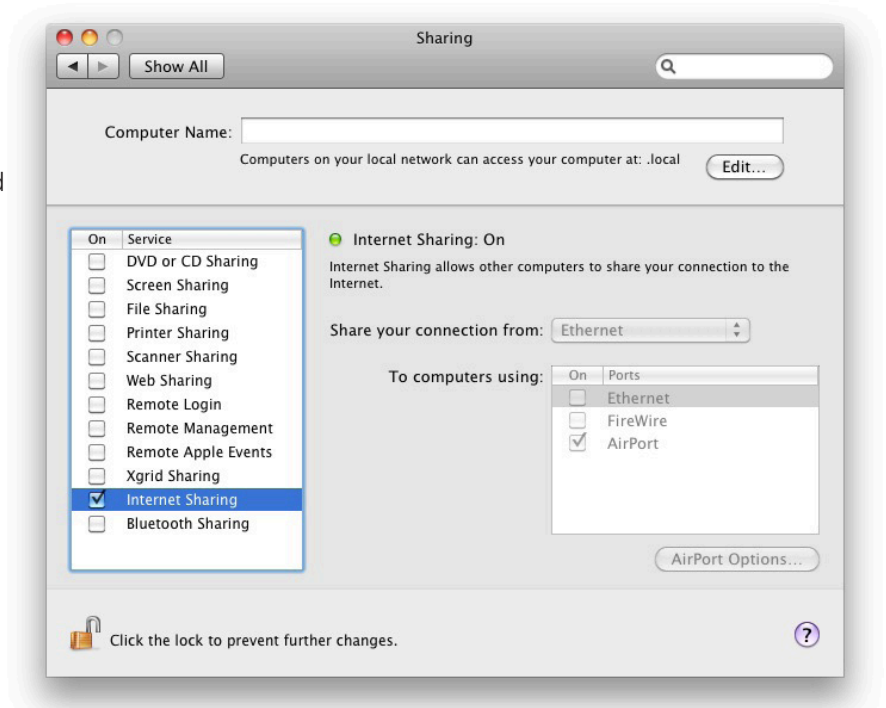
1. Ad hoc network

Activate Internet Sharing to computers using AirPort.

Go to System Preferences / Sharing. Find "Internet Sharing" in the list and uncheck it. Share your connection FROM Ethernet TO computers using AirPort. Click on AirPort Options if you want to set a password. Put a checkmark next to "Internet

Connect to the ad hoc network with your iPhone/iPad.

Go to Settings / Wi-Fi on your iPhone/iPad and connect to the ad hoc network.



2. Grid Connector

Open Grid Connector before using Grid.

Make sure you always have the Grid Connector open when you want to use Grid.





Running Griid any other time

1. Ad-hoc Network 2. Griid Connector 3. Launch Griid

3. Launch Griid

Launch Griid on your iPad and select AUTO CONNECT.



Check that your iPad is connected to the ad-hoc network. You should see the AirPort symbol in the upper lefthand corner.





Troubleshooting scenarios

■ “Could not find Grid Connector on the Wi-Fi network.”

This lack of connectivity could be due to a number of factors.

Carefully following this list of actions should remedy the problem:

- Check that your iPad is connected to the same network as the computer.
- Check that you have the latest version of Grid Connector installed and running.
- Check that you are running the latest version of Live.
- Check that Bluetooth is turned off on the iPad.
- Close and restart the Grid Connector.
- Quit Grid on the iPad/iPhone, kill the app from the multitasking bar.

Now try launching Grid and connecting with Auto Connect. If Auto Connect still doesn't work try Manual Connect with the computer's ip.

If the connection still fails, please contact support@grid.net

■ “Grid seems to connect, fades to black and says MIDI Error”

Good news, your network settings are ok. This problem means that Live and Grid Connector are not talking to each other.

Follow this list of actions:

- Check Live Preferences / MIDI Sync Control Surface is set to Grid.
- Check Control Surface Input set to Grid and Output set to Grid.

Now try to connect with Auto Connect.

If the problem persists, contact support@grid.net

■ “My internet doesn't work!”

Disable Internet Sharing to go back to your previous network settings.