



Grid Setup Guide



Thank you for purchasing Grid!

Setting up Grid for the first time will take between ten and fifteen minutes. Any time after that will take under sixty seconds.

We've outlined action points in bold, in the left-hand side margin. If you feel comfortable, you can just do the action points and skip the subsequent explanations. Read the explanations to know more about what's going on.

What do you want to do? Choose the chapter which fits your situation.



Installing Grid



Connecting Grid



Hybrid Control



Troubleshooting



INDEX



Installing Griid

4

1. Installing Griid

1.1 Installing / updating the app

4

1.2 Ad-hoc networks

6



Connecting Griid

9

2. Connecting Griid

2.1 OSC

9

2.2 MIDI

2.2.1 Network MIDI and Wi-Fi Connection

11

2.2.2 CoreMIDI and Cable Connection

13



Hybrid Control

15

3. Hybrid Control - Liine Griid + Livid Code

3.1 What is Hybrid Control?

15

3.2 Setting it up

16

3.3 CodeGriid Remote Script functions

17



Troubleshooting

18

4. Common Connection problems

4.1 Liine Griid problems

18

4.2 Livid Code problems

19



1. Running the Grid Installer - OSX

Download and run Grid Installer (available from grid.net/support). Select the Live 8 application when prompted.

Download the latest **Grid Installer** from grid.net/support, locate it on your hard disk, unzip it and double-click on **Grid Installer**.

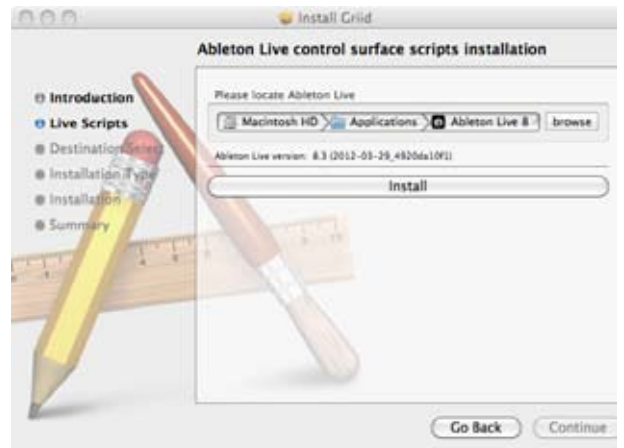


You will be presented with a message box saying that you need to choose your **Ableton Live** application.

Browse to your Applications folder for Live 8.3, or a folder called "Live 8.x.x OS X" (where 8.x.x is the version) and click on the Live application itself.

Complete the installation by clicking 'Install' and then following standard installation procedures. The installer copies the necessary Remote Scripts for Grid to your Ableton Live application.

If you want to install Grid support in several different versions of Live, you'll have to run Grid Installer again for each different version.



IMPORTANT INFO:

The installer will also install the **Grid Connector** to your Applications folder. You only need to have **Grid Connector** running if you want to use **Grid via OSC**. We'll come back to this later.



Grid Connector



1. Running the Grid Installer - PC

Download and run Bonjour Print Services (available from apple.com).

Download Bonjour Print Services from <http://support.apple.com/kb/DL999>. Once downloaded, install the package.

Download and run Grid Installer (available from gridid.net/support). Select the Live 8 application when prompted.

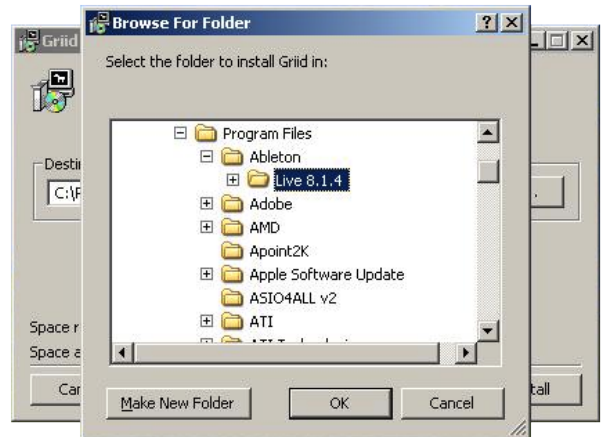
Download the latest **Grid Installer for Windows** from gridid.net/support, locate it on your hard disk, unzip it and double-click on **Grid Installer**. You will be presented with a message box saying that you need to choose your Ableton Live application.

Browse to your Program Files folder for Live 8.3, or a folder called "Live 8.x.x" (where 8.x.x is the version) and click on the Live application itself.

When you install Grid on Windows XP, you will get an installation wizard. Choose "No, not this time" and accept "Install the software automatically"

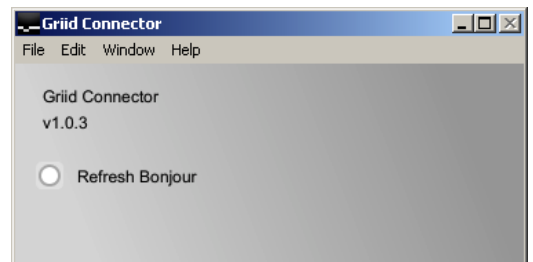
The installer copies the necessary Remote Scripts for Grid to your Ableton Live application.

If you want to install Grid support in several different versions of Live, you'll have to run Grid Installer again for each different version.



IMPORTANT INFO:

The installer will also install the Grid Connector to your Applications folder. You only need to have Grid Connector running if you want to use Grid via OSC.





Creating ad-hoc network - Mac

1. Installing Grid 2. Ad-hoc Networks

2. Creating ad-hoc network - Mac

OS X - All versions

10.5 - 10.7

The OS X connection method is essentially the same across all recent versions, except that **AirPort** is now called **Wi-Fi** in OS X 10.7.

If Network Status is shown in the MenuBar then click the Wi-Fi icon and select 'Create Network'.

Name your network 'Grid' or your preferred network name. You may also select a Wi-Fi Channel or set a password here if you wish.

Otherwise, go to System Preferences / Network. Select 'AirPort' from the list of service devices, click on the 'Network Name' and then select 'Create Network' from the drop-down menu.

Name your ad-hoc network 'Grid' and click 'OK', taking you back to the Network Panel.

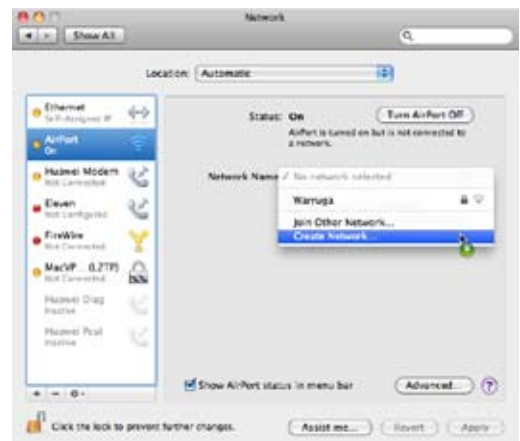
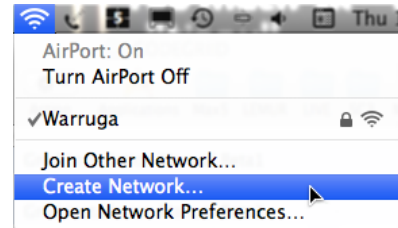
Enable 'Show AirPort status in menu bar' (if desired), and click 'Apply'.

A 'self-assigned' IP address will soon show in the panel and the network will be created. You may also create a network with a static IP address if you wish, but it is not necessary.

You may now close System Preferences.



QUICK TIP: It is possible to connect Grid via a router. However, this increases latency. Due to the vast number of possible network configurations, we only offer support for ad-hoc networks.





2. Creating ad-hoc network - PC

Windows 7

▼ <http://windows.microsoft.com/en-US/windows-vista/Set-up-a-computer-to-computer-ad-hoc-network>

Click on 'Start' and type "wireless" and then clicking 'manage wireless networks'.

Click on "Add ...", then "Create an ad hoc network", and "Next".

Enter 'Griid' as the network name and optionally set a password.

Click "Next to finish".

Windows Vista

<http://windows.microsoft.com/en-US/windows-vista/Set-up-a-computer-to-computer-ad-hoc-network>

Open "Connect to a Network" by clicking the 'Start' button and then clicking 'Connect to'.

Click "Set up a connection or network".

Click "Set up an ad hoc (computer-to-computer) network, click Next, and then follow the steps in the wizard.

Windows XP

<http://windows.microsoft.com/windowsxp/using/networking/se yup/adhoc.mspx>

Go to Control Panel / Network Connections.

Right-click on "Wireless Network Connection", select "Properties"

In the Wireless Networks tab, click "Add ..." and enter 'Griid' as the SSID. Optionally set a password.

Make sure the checkbox is ticked next to "This is a computer-to-computer (ad-hoc) network".

▼ Click OK



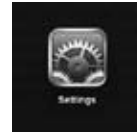
Creating ad-hoc network - PC

1. Installing Grid 2. Ad-hoc Networks

3. Connecting iPad to ad-hoc network - Mac or PC

Connect iPhone/iPad to the Grid network you created earlier

Open the Settings App



Select Wi-Fi



Select Grid in the list of networks



Check for the Wi-Fi logo in the top left corner of your iPad to confirm that you are connected.



Connecting Grid - OSC

1. OSC via Wi-Fi and Grid Connector

2.1 OSC via Wi-Fi

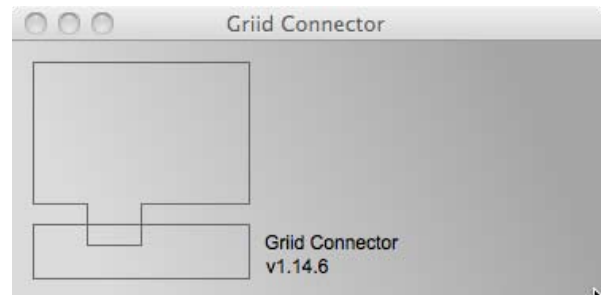
The Grid Connector is only needed if you want to use OSC (Open Sound Control) to communicate with Live. Start Grid Connector which was installed in your Applications folder and select the Grid Port to setup the Control Surface in Live. See Chapter 3.

Connect iPhone/iPad to your Wi-Fi network.

If you use the same name each time for your ad-hoc network (ie. 'Grid'), your iPhone/iPad will remember the IP settings you used last time you connected to this network.

Grid Connector uses OSC over a Wi-Fi Connection to connect the Grid Control Surface.

Start Grid Connector which was installed in your Applications folder and select the Grid Port to setup the Control Surface in Live. See Chapter 3.



IMPORTANT: Make sure that you start Grid Connector **AFTER** setting up your network. Setting up Grid Connector is the last thing to do before launching Grid.



QUICK TIP: Adding Grid Connector to your dock will make your life easier.

Grid OSC via Connector

Start Ableton Live and open the Preferences (click on Live in the menu bar and select Preferences).

Select Grid as Control Surface in Live Preferences / MIDI Sync.

In the MIDI Sync section, choose Grid as your Control Surface, and the MIDI Interface and Port that your iPad is connected to as the Input and Output. You don't need to set anything in Track, Sync or Remote. (It really doesn't matter if Track/Sync/Remote are on or off for Network MIDI, but turning them off is prettier.)

Set Input and Output to 'Grid' for the Grid Connector.



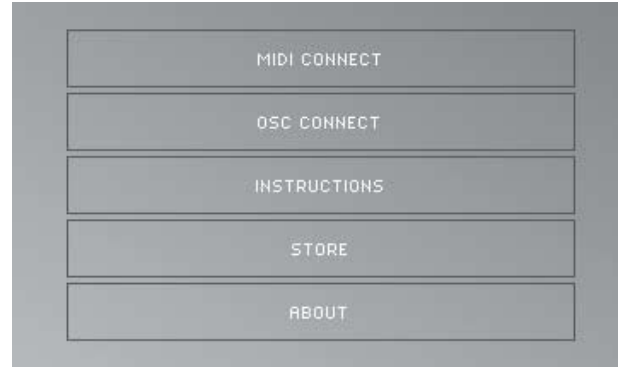


Connecting Grid - OSC

1. OSC via Wi-Fi and Grid Connector

Launch the Grid App on your iPad (or iPhone/iPod Touch) and select OSC CONNECT

Select OSC CONNECT to connect via the Grid Connector.



Select your OSC Grid Connector server.

Select the /Grid entry in the list to connect to the Grid Connector on your computer.



The screen fades to black and then to the Grid application



Connecting Griid - Network MIDI

1. Connect to Network

2. Create Network MIDI Session

3. Setup Control Surfaces

4. Connect from Griid

Connecting via Network MIDI

Connect iPhone/iPad to your Wi-Fi network.

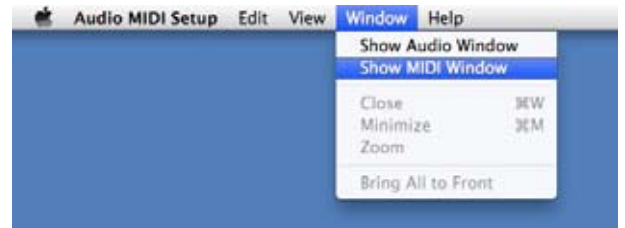
If you use the same name each time for your ad-hoc network (ie. 'Griid'), your iPhone/iPad will remember the IP settings you used last time you connected to this network.

On MAC:

On OS X:

Network MIDI Session via Wi-Fi Connection

Double-click on Audio MIDI Setup, which you'll find in /Applications/Utilities. Next, double-click on the Network Driver icon.



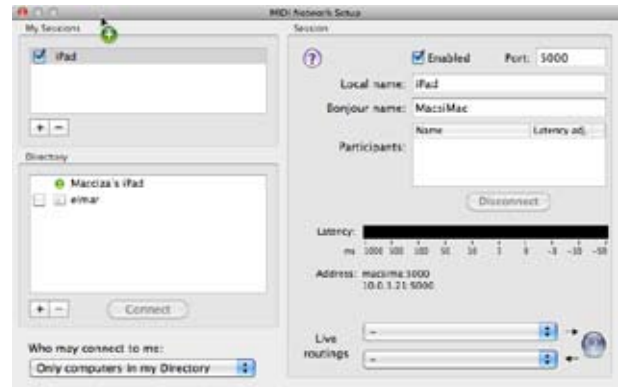
The Network icon is visible in the MIDI Window (also called MIDI Studio). If you can't see the MIDI Window, click on Show MIDI Window in the menu bar.



QUICK TIP: Add Audio MIDI Setup to your dock, quick access is very handy!

Create Network MIDI Session. Ensure 'Enabled' checkbox is ticked.

You can create Network MIDI Session by clicking the '+' symbol below the 'My Session' pane. You can name it anything you want, but calling it 'Griid' will keep things nice and simple. Your iPad should appear in the 'Directory' pane. Simply select your iPad and hit 'Connect' to become a 'Participant' in the Network MIDI Session.



This is the MIDI Network you will connect to when starting Griid, if you wish to use wireless MIDI.



Connecting Grid - Network MIDI

1. Connect to Network

2. Create Network MIDI Session

3. Setup Control Surfaces

4. Connect from Grid

Ableton Live 8 Grid Control Surface

Grid Network MIDI

Select Grid as Control Surface in Live Preferences / MIDI Sync.

Set Input to Network MIDI session created earlier.

Start Ableton Live and open the Preferences (click on Live in the menu bar and select Preferences).

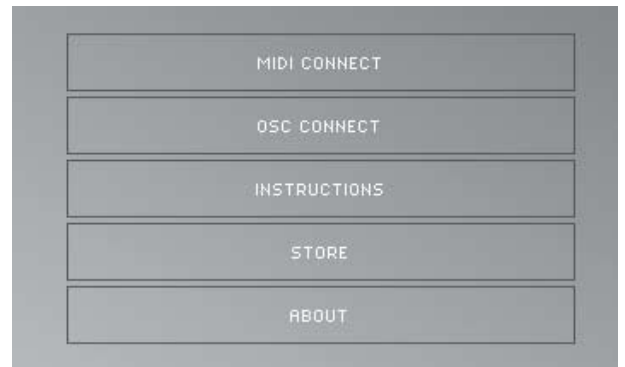
In the MIDI Sync section, choose Grid as your Control Surface, and the Network MIDI Session you created as the Input and Output. You don't need to set anything in Track, Sync or Remote. (It really doesn't matter if Track/Sync/Remote are on or off for Network MIDI, but turning them off is prettier.)



Connect Grid

Launch the Grid App on your iPad (or iPhone/iPod Touch) and select MIDI CONNECT.

Select MIDI CONNECT to connect via CoreMIDI and a USB MIDI device, or via Wi-Fi Network MIDI Session.



Select the Network MIDI Session you created previously.

Select the Network MIDI Session that you created previously to connect via Wi-Fi MIDI.



The screen fades to black and then to the Grid application



Connecting Grid - USB MIDI

1. Connect MIDI Interface to iPad

2. Connect to Computer

3. Setup Control Surfaces

4. Connect from Grid

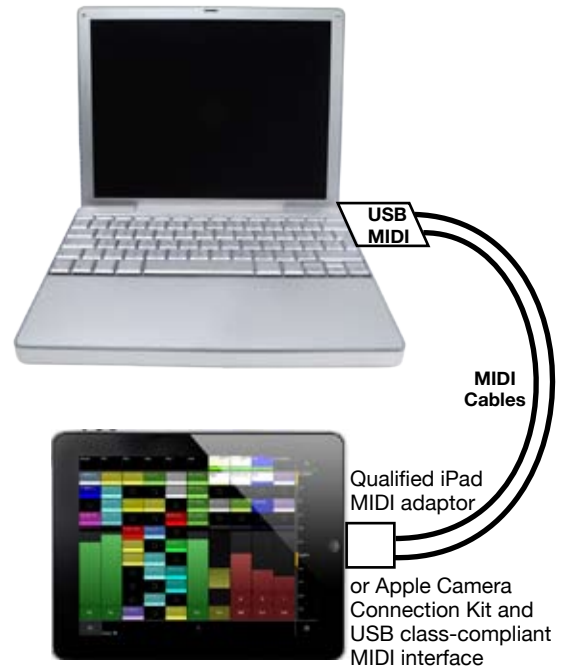
USB MIDI Setup

Hardware MIDI Connection from iPad via CoreMIDI

Grid now supports wired USB MIDI connections from the iPad via either dedicated iPad solutions, or with the Apple Camera Connection Kit and a USB class-compliant MIDI interface.

Simply connect your qualified device to your iPad and connect it with MIDI cables to your computers MIDI ports. Select the connected MIDI port in Ableton Live's MIDI setup.

When starting up Grid, select MIDI CONNECT on the start page, then select USB MIDI on the setup page and select your CoreMIDI device to connect.



Ableton Live 8 Grid Control Surface

Grid USB MIDI

Select Grid as Control Surface in Live Preferences / MIDI Sync.

Set Input to MIDI Port that your iPad is connected to.

Start Ableton Live and open the Preferences (click on Live in the menu bar and select Preferences).

In the MIDI Sync section, choose Grid as your Control Surface, and the MIDI Interface and Port that your iPad is connected to as the Input and Output. You don't need to set anything in Track, Sync or Remote. (It really doesn't matter if Track/Sync/Remote are on or off for Network MIDI, but turning them off is prettier.)





Connecting Grid - USB MIDI

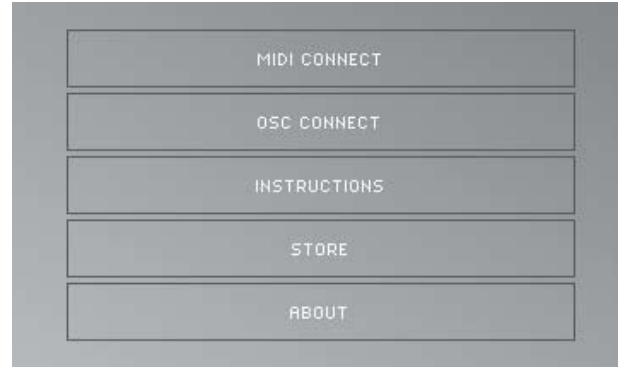
1. Make Connections

2. Launch Grid

Connect Grid

Launch the Grid App on your iPad (or iPhone/iPod Touch) and select **MIDI CONNECT**.

Select **MIDI CONNECT** to connect via CoreMIDI and a USB MIDI device.



Select your CoreMIDI device.

Switch on USB MIDI.

Select a port on your connected CoreMIDI device and click 'GO'.



The screen fades to black and then to the Grid application



Hybrid Control Setup

1. Make Connections

2. Launch Griid

What is 'Hybrid Control'?

Hybrid Control - the combination of both tangible and virtual.

Hybrid Control is built into Griid as of version 1.14.6. Simply update the app.

Liine have often stated that the ultimate control setup involves both hardware and multitouch. Now Liine and Livid have teamed up to create a truly unique Ableton Live control experience. Griid and Code can now be linked as a single controller - virtual and tangible multitouch.

The Code Grid Ableton Live Remote Script provides four modes for Code: Mixer, EQ 3, and Devices(x2). Code track selection is available from Griid, and Griid navigation is synced in Code, Code support is available on <http://lividinstruments.com/>.

Livid Code connection and setup

Make sure your firmware is up to date . Download and install the latest code firmware and editor versions from Livid support.

Make sure you are up-to-date with your Livid Code. Download the latest Code Firmware, Code Editor and the CodeGriid Live Remote Script from Livid support and update your hardware and software according .

The CodeGriid Remote Script has to be installed into Live 8 to set it up. See the Livid CodeGriid installation package for instructions.

Connect your Code to your computer via an available USB port. The Code is a USB Class-compliant device and needs no additional driver installation.

It should appear in your computer systems MIDI setup application and as a MIDI Port in Ableton Live's MIDI Preferences.

Please consult Livid Code operation documentation and support services to confirm proper functioning of your unit.



USB Cable

Wi-Fi Connection



IMPORTANT INFO:
The installer will also install the Griid Connector to your Applications folder. You'll need to have Griid Connector running when you use Griid via OSC.



Hybrid Control Setup

1. Make Connections

2. Launch Grid

Ableton Live 8 CodeGrid Control Surface setup

CodeGrid Setup

Select CodeGrid as a Control Surface in Live Preferences / MIDI Sync.

Set Input and Output to your Code's USB MIDI Port.

Start Ableton Live and open the Preferences (click on Live in the menu bar and select Preferences).

In the MIDI Sync section, choose CodeGrid as your Control Surface, and the Code's USB MIDI Port as the Input and Output. You don't need to set anything in Track, Sync or Remote. (It really doesn't matter if Track/Sync/Remote are on or off for the Code's MIDI Port, but turning them off is prettier.)





Hybrid Control Setup

1. Make Connections

2. Launch Grid

CodeGrid Ableton Live Remote Script functions

CodeGrid Live Remote Script

The CodeGrid Ableton Live Remote Script provides the the integration between Code and Grid.

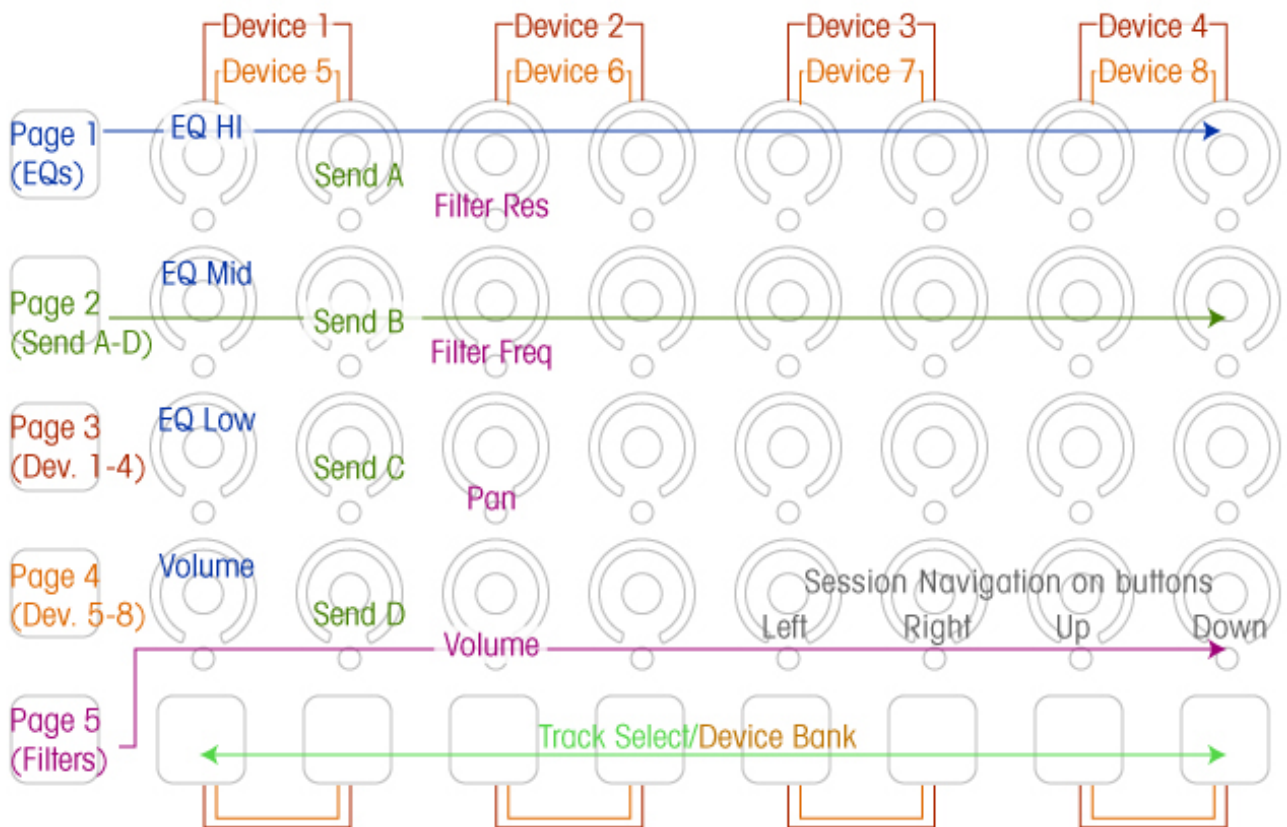
The Code Grid Remote Script provides the vital link between Grid and Code

Code track selection is reflected by Grid and Grid navigation is synced in Code,

In addition to Mixer capabilities the scripts provide four modes of operation accessed via the left-hand buttons on the Code:

EQ 3,
Sends,
Devices(x2),
Filter control.

Detailed information on Livid Code features and operation is available from Livid Instruments



Code + Grid mapping

Page 1, 2, and 5 are columns in a "channel strip" configuration, Pages 3 & 4 are in 2x4 quadrants
Bottom buttons act as Device Bank Left and Right buttons below the two device columns
Session navigation is better handled by Grid, however, they are included if no iPad is available



Troubleshooting scenarios

■ “Connection errors.”

Carefully following this list of actions should remedy the problem:

- Check you are correctly connected to your Griid ad-hoc network (and not your router). Is the grey ad-hoc network icon present in the menu bar?
- For OSC connection, check that the Griid Connector is open.
- For MIDI via Wi-Fi, check that the Griid Network MIDI Session is established..
- Check that the correct selections have been made for your choice of connection method in the Control Surface section of Ableton Lives MIDI preferences

■ “Error Messages”

Connection timed out

Make sure that the Griid Control Surface script is loaded and correct selected in Live. Check the Control Surface settings in Ableton Lives MIDI preferences and make sure that you have selected Griid Network MIDI Session ; and not the Griid Connector.

MIDI Error

Communication between Griid and Ableton Live could not be established. Check the Control Surface settings in Ableton Lives MIDI preferences and make sure that you have selected ‘Griid’ - the Griid Connector; and not a Griid Network MIDI Session.

Connector / Scripts Update Required

You either need to update your Griid Connector and Control Surface Scripts, or you may have selected the computer and service incorrectly.

If your connection still fails, please contact support@griid.net

■ “Griid seems to connect, fades to black and nothing appears.”

Good news, your network settings are probably ok. This problem usually means that Live and Griid are not talking to each other.

Follow this list of actions:

- Check Live Preferences / MIDI Sync Control Surface is set to Griid.
- Check Control Surface Input set to correctly for your connection method.
- Check that the Griid Connector is still open if you are using OSC.
- Check that the Network MIDI Session is still operational if you are using Wi-Fi MIDI.

Shutdown the Griid app. Restart and attempt to reconnect, it should work.

If the problem persists, contact support@griid.net



■ “Problems with Livid Code.”

- Make sure your USB cable is properly connected.
- If you are using a USB hub, try connecting the Code USB cable directly to your computer.
- The Encoders and LED Rings should operate once the Code has connected to the computer and a software has opened the MIDI Ports

If you are using a Macintosh Computer running OSX, make sure you have Code selected as your device in the Audio MIDI setup. To access Audio MIDI go to Applications>Utilities>Audio MIDI Setup.

Check to make sure your software is configured to use the Code.

Open your application’s preferences to verify that the software is configured to receive the MIDI messages from the Code controller.

Windows XP will show the port names as “USB Audio Device” and “USB Audio Device[2]”, though the “New Hardware Found” popup will show the device as “Code”.

Windows 7 will show your controller as Code and will automatically recognize the device.

If you are still having problems, confirm that you are receiving MIDI data using MidiMonitor (for OS X) at <http://www.snoize.com/MIDIMonitor/> or MIDIOX (for Windows) <http://www.midiox.com>.