

# Kapture Pad

Setup Guide OS X

Version 1.1.4

# Kapture Pad - Setup Guide OS X

1. Introduction
2. Installing and using Kapture Pad for the first time
  - 2.1 Kapture Pad Installer
  - 2.2 Ad hoc network
  - 2.3 Kapture Pad Connector
  - 2.4 Ableton Live 8 Control Surface
  - 2.5 Launch Kapture Pad
3. Using Kapture Pad any other time
  - 3.1 Ad hoc network
  - 3.2 Kapture Pad Connector
  - 3.3 Launch Kapture Pad

## 1. Introduction

Thanks for purchasing Kapture Pad! Setting up Kapture Pad for the first time should take about 5 minutes. Starting Kapture Pad any time after that will be very quick.

If you run into any trouble, make sure you've followed all the steps. You can always consult the forum - <http://liine.net/forum> - or contact us at [support@liine.net](mailto:support@liine.net)

## 3. Installing and using Kapture Pad for the first time

### 2.1 Kapture Pad Installer

Download and run the *Kapture Pad Installer* from <http://liine.net/en/support>

When prompted for the Live 8 folder, select the folder where you installed Live. This is usually `/Applications/Live 8.x.x OS X/`. If you want to use Kapture Pad with different versions of Live 8, you will need to run the installer for each version.

The installer will also copy Kapture Pad Connector to your `/Applications` folder. You'll need to run the Connector when you want to use Kapture Pad. We'll get back to this later.

## 2.2 Ad hoc network

The most reliable way to create an ad-hoc network in OS X is with Internet Sharing.

Go to System Preferences / Sharing. Find “Internet Sharing” in the list and uncheck it. Share your connection FROM Ethernet TO computers using AirPort. Click on AirPort Options if you want to set a password. Put a checkmark next to “Internet Sharing” and you’re done.

Once that’s done, Go to Settings / Wi-Fi on your iPhone/iPad and connect to the ad hoc network.



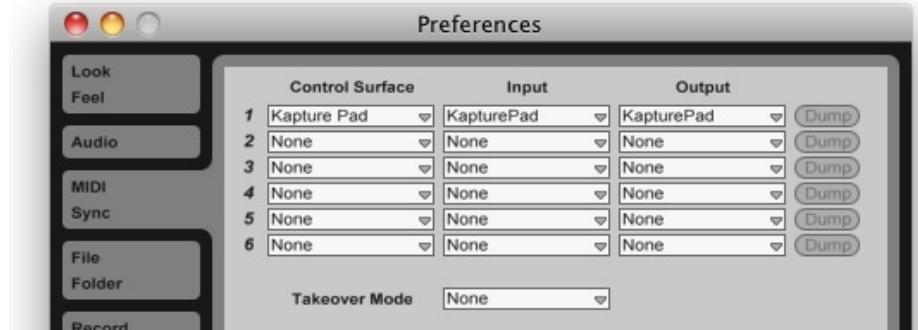
## 2.3 Kapture Pad Connector

The Kapture Pad Connector was installed to /Applications/Kapture Pad. Make sure you always have the Kapture Pad Connector open when you want to use Kapture Pad. There is nothing to configure.

## 2.4 Ableton Live 8 Control Surface

Start Ableton Live and open the Preferences / MIDI Sync. Choose the following settings:

- Control Surface: Kapture Pad
- Input: KapturePad
- Output: KapturePad



## 2.5 Launch Kapture Pad

Check that your iPad is connected to the ad-hoc network. You should see the AirPort symbol in the upper lefthand corner. Launch the Kapture Pad app.

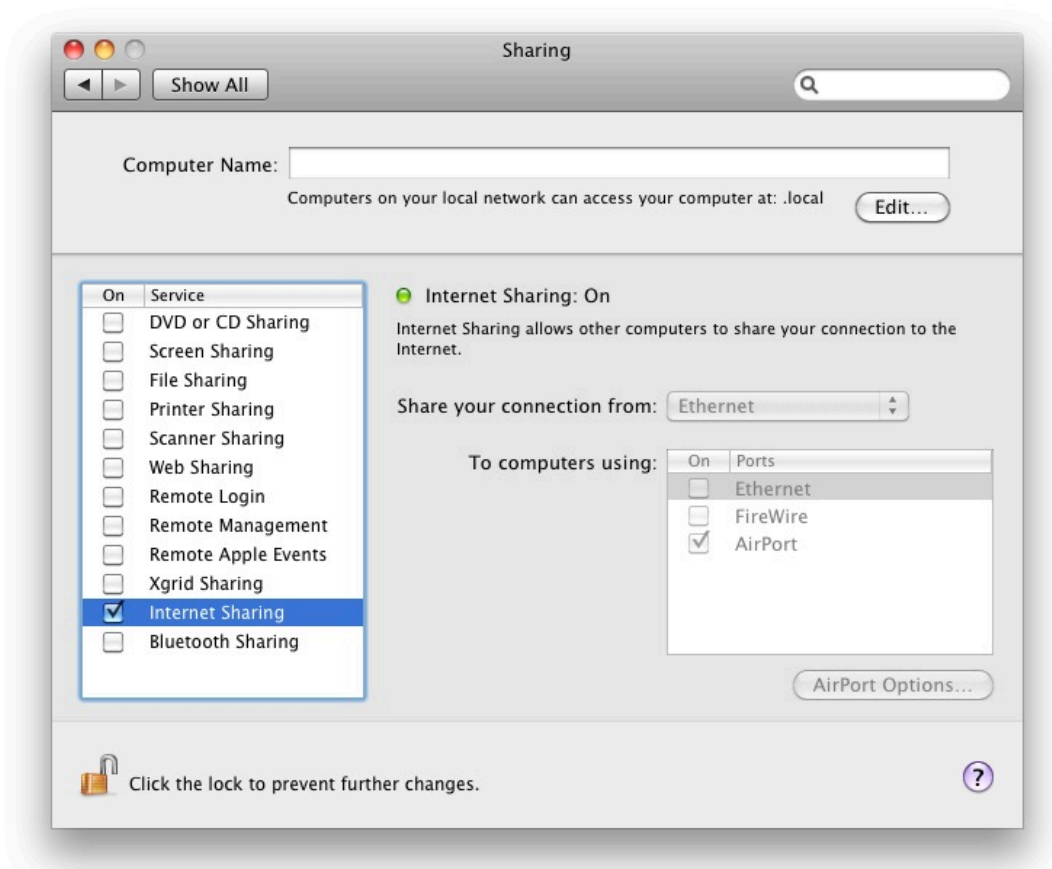


## 3. Using Kapture Pad any other time

### 3.1 Ad hoc network

Go to System Preferences / Sharing. Find “Internet Sharing” in the list and uncheck it. Share your connection FROM Ethernet TO computers using AirPort. Click on AirPort Options if you want to set a password. Put a checkmark next to “Internet Sharing”.

Go to Settings / Wi-Fi on your iPhone/iPad and connect to the ad hoc network.



### 3.2 Kapture Pad Connector

Start the Kapture Pad Connector, was installed to /Applications/Kapture Pad. Make sure you always have the Kapture Pad Connector open when you want to use Kapture Pad. There is nothing to configure.

### 3.3 Launch Kapture Pad

Check that your iPad is connected to the ad-hoc network. You should see the AirPort symbol in the upper lefthand corner. Launch the Kapture Pad app.